



# EDVR16D3

The most comprehensive digital video recorder  
features 16 Channels, 480FPS,  
MPEG4 Compression and Internal DVD+RW Burner



# EDVR16D3 with 16 Channels, 480FPS, MPEG4 Compression and Internal DVD+RW Burner



Utilizing the latest MPEG4 compression technology, the EverFocus EDVR16D3 offers high recording rate of 480 FPS with the ability to transfer recorded video onto a DVD disc with the built-in DVD burner. With the option to chose from three main monitor outputs (BNC composite, VGA, and S-Video), the EDVR16D3 also comes with 2 internal hard drives for all your storage needs. Without a doubt, the EDVR16D3 from EverFocus is your most comprehensive digital recording solution.

## ► Features

- Pentaplex Operation (Live, Recording, Playback, Archiving, Remote Viewing)
- Built-in MPEG4 Codec with Configurable Quality
- Composite, VGA, and S-Video outputs for main monitor
- Variable Recording Speeds (up to 480/400 FPS for NTSC/PAL)
- Audio Recording Capabilities
- Multiple Motion Detection Capabilities for each camera (28x22)
- Support RS485 for PTZ and/or control keyboard
- Built-in real time clock and Auto Time Synchronization with global NTP server through Internet
- Up to Two 3.5" IDE Hard Disks can be added
- Ethernet Interface for Remote Network Viewing and Controlling
- Shuttle/Jog Dial for Picture-by-Picture or Fast/Slow Viewing
- Easy to use front panel keypad, shuttle/jog, IR remote controller, and control keyboard (optional - EKB500)
- On-Screen Menus Operations with Multi-Language Support
- Real-Time Live Display for all Cameras
- 2 USB 2.0 Interface for Mouse and archiving
- Support external DVD+RW for archiving
- Built-in DVD/RW for video clip exporting
- Water Mark Capabilities restores previous settings in the event of a power outage
- USB2.0 port for video clip exporting, supports USB thumb drive
- Free DDNS server for use with dynamic IP addresses
- System diagnostic feature alert users of HDD or system problems via Email or alarm output

## ► Advantages

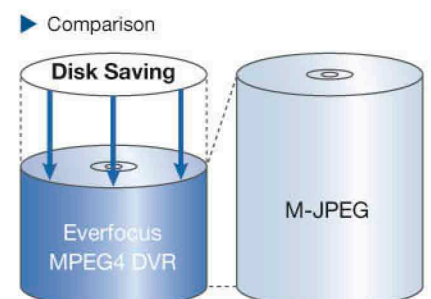
### User friendly USB mouse and jog shuttle support for easy operation

The full-size DVR series offers the familiarity of a multiplexer with VCR style control keys, and user friendly step-by-step menu to simplify installation and training process.



### Up to 10 times the recording length of comparable M-JPEG DVRs

The EDVR16D3 features MPEG4 compression technology that allows you to store up to 10 times as much video per gigabyte of disk space than with the conventional compression algorithms. In addition, MPEG4 compression results in less noise and distortion, delivering high-quality images for archiving, playback and storage.



## TCP/IP READY

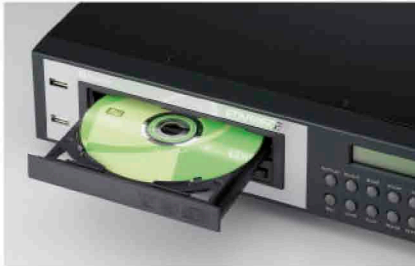
The EDVR16D3 allow users to monitor video recordings remotely through a simple TCP/IP connection. Our remote viewing software is embedded in the DVR unit and password protected to enable remote monitoring from any secure network connection.

## Intuitive, easy-to-learn interfaces

Like all EverFocus digital recording systems, our DVRs are designed for easy configuration and set-up through simple software interfaces and controls.

## Built-in DVD+RW Burner

The internal DVD+RW drive allows users to archive video or images to a re-writable DVD disc. Archiving to DVD is a simple and user-friendly process that can be taught to facility managers quickly and easily.



## USB2.0 interface

USB2.0 ports allow video and image archiving to USB flash memory drive. Users can also use the USB ports to upgrade the system firmware in the event of future releases.

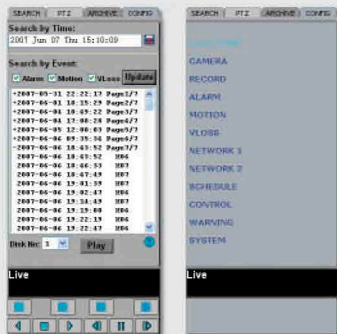


## Remote Control by a PC

With the built-in LAN terminal, users can enable remote control of the EDVR16D3 through a PC with network connection (e.g. Internet Explorer) without the excess need of software. This will allow you to search and archive recorded video, control PTZ dome camera systems, and download video recordings to your PC. For certain restrictions apply; the EDVR16D3 can be set with password protection to limit user access.

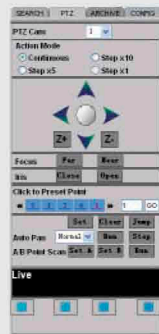
### Remote Search & Configuration Setting:

Remote monitoring, recording, playback, change system settings and dome camera control via Ethernet and/or Internet



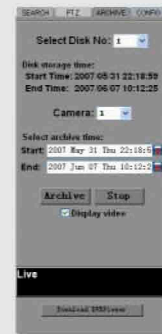
### PTZ Control:

Multiple PTZ protocols are supported.



### Remote Archive:

Backup files manually or by schedule with the remote central monitoring station.



## 1TB Large-Capacity Design

In the main body of the EDVR16D3, a maximum of 2 hard drives with 500GB of disk storage can be installed, giving you the large disc capacity of 1 TB. SCSI connector allows additional storage capacity with EverFocus EDA800 disk array.



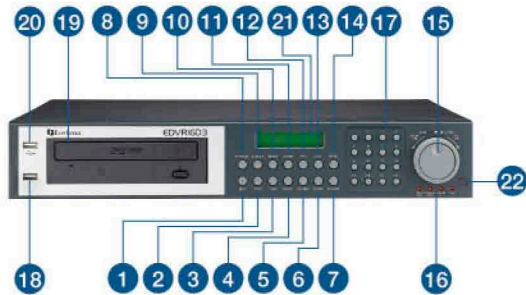
## System Stability and Warning setup

All EDVR16D3 DVRs are equipped with high-powered hard drives and low-noise fans to prevent overheating. In the event of HDD or system failure, users will be notified via E-mail or alarm output if the internal hard drive fans are not functioning properly.



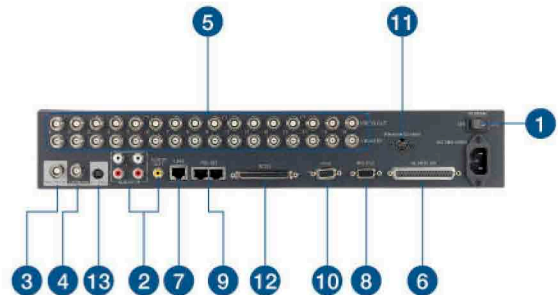
## EDVR16D3 Functional Layout

### Front Panel Design



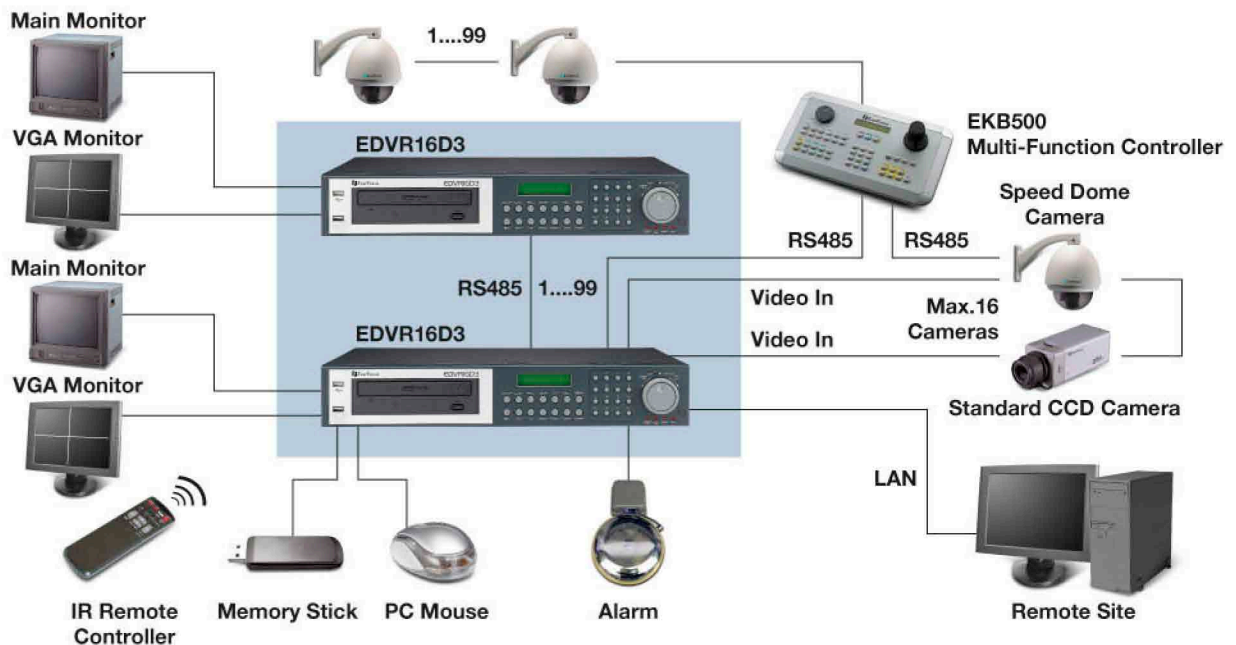
- |           |                         |                       |
|-----------|-------------------------|-----------------------|
| 1 REC     | 9 Select                | 16 System LED         |
| 2 Stop    | 10 Mode                 | 17 Channel Key (1~16) |
| 3 Play    | 11 Zoom                 | 18 USB Mouse          |
| 4 Pause   | 12 SEQ                  | 19 DVD-RW Burner      |
| 5 Search  | 13 Call                 | 20 USB Slot           |
| 6 Copy    | 14 Menu                 | 21 LCD Panel          |
| 7 Enter   | 15 Shuttle and Jog Dial | 22 Remote Control     |
| 8 Display |                         |                       |

### Back Panel Design

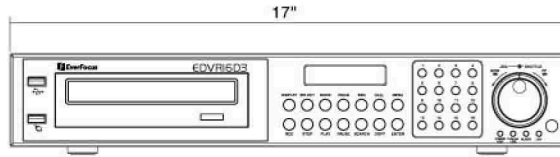


- |                        |  |
|------------------------|--|
| 1 Main Power plug      | 8 RS232 connector  |
| 2 Audio IN / Audio OUT | 9 RS485 connector  |
| 3 MAIN MONITOR         | 10 VGA output  |
| 4 CALL MONITOR         | 11 Remote Control receiver (extension cable is optional) |
| 5 VIDEO IN / OUT       | 12 SCSI  |
| 6 ALARM INPUT / OUTPUT | 13 S-Video   |
| 7 LAN Connector        |  |

## System Configuration



## ► Dimension Diagram



(Unit: inch)

## ► Optional Components

### EKB500

#### Multi-Function Keyboard Controller

- Controls PTZ cameras, DVRs, and Monitors
- 3D joystick for PTZ control
- LCD Display
- Multi-Protocol Support (Everfocus\_enhance protocol; Pelco P/D)
- Jog shuttle for DVR control



#### Color Surveillance Cameras

### EBD330

#### 3-Axis Gimbals IR Color Dome Camera

- 480TVL
- Designed with 3-axis gimbal ring so camera can be tilted freely in any direction
- Light sensitivity of 0.5lux/F=1.2 (AGC On) / 0 Lux (IR On)
- View angle 42°~78°
- IP66 Weatherproof rated
- 14 IR LED with 20,000 hours of lifespan



### EFD300A

#### 1/3" Color High-Resolution Flush Dome Camera

- 480TVL lines of horizontal resolution
- Tool-less feature enables easy, trouble-free camera adjustment
- Plenum-rated back box
- Features a "twist to lock" trim ring to ensure a secure connection
- Manual Pan/Tilt mechanism
- Designed with polycarbonate dome shell for vandal resistant
- BLC and AGC on/off switchable



### EQ600

#### Wide Dynamic High-Res. Color Camera

- High resolution: Over 480 TV Lines/ 1.0lux and low speed shutter up to 32x
- With programmable camera ID up to 12 characters
- Free S/W for remote configuration through RS232 via PC



### EHD525EX

#### EXView Day & Night Rugged Dome Camera

- High sensitivity designed with 2nd generation SONY EXView sensor
- Revolutionary integrated 10-bit Digital Signal Processor (DSP) delivers excellent picture quality and performance
- Low light sensitivity of 0.1Lux/F=1.2 is achieved by using the advanced 1/3" interline transfer color EXView CCD
- Electronic shutter and AGC allows the camera to be operated in various light levels
- Power Supply:DC12V or AC24V switches automatically; Line Lock for AC24V
- S/N Ratio reaches 52 dB or more
- IR Vari-focal lens available
- Day/Night feature with IR cut removable module
- Unique security screw lock



### EPTZ3000

#### Outdoor Day/Night PTZ (30x)

- Wide-Dynamic Day/Night Outdoor PTZ
- Vertical double density interline CCD with a slower shutter and Day/Night function
- Electronic flip, no mechanical flip is necessary



### EQ550

#### 1/3" 530TVL True Day/Night Dynamic Noise Reduction Camera

- Excellent Super-high Resolution technology, 530 TV lines of horizontal resolution
- Built-in DNR (Dynamic Noise Reduction) for noise reduction and a 70% saving of disk storage
- The starlight Super-high sensitivity of 0.002 Lux/F=1.2 is achieved by setting SENS-UP Shutter X128



\* All photographs and menus are simulated and shown for the purpose of explanation. Actual images may differ. Weights and dimensions are approximate. Specifications are subject to change without notice

# EDVR16D3: 16-Channel, 480FPS, MPEG4 Compression, Internal DVD+RW Burner

## ► Specifications

Video		Playback	
Format	NTSC/PAL	Play, pause, stop, fast forward (x2, x4, x8, x16, x32, x600), step forward, fast backward (x2, x4, x8, x16, x32, x600), step backward	
Inputs	16 camera inputs (BNC), 1Vp-p/75ohm	Motion Detection	Multiple configurable detection areas (28x22) & different sensitivity for each camera
Loop Through Out	16 BNC camera inputs (1Vp-p/75ohm)	Event Log	Yes
Outputs	Main Monitor: 1 BNC composite video output, 1 VGA output (1Vp-p/75ohm), 1 S-Video	User Interface	User friendly OSD menu
	Call Monitor: 1 BNC composite video output (1Vp-p/75ohm)	Setup	On screen display setup
Compression	MPEG4	Timer	Built-in real time clock and Auto Time Synchronization with global NTP server through Internet
Recording Resolution	720x480 (NTSC) / 720x576 (PAL)	Watch Dog Timer	Yes
Display	Full, 4, 7, 9, 10, 13, 16, PIP (Live only) and 2x2 Zoom for Live and Playback	Title	12-character title generator for each camera
Live Display Resolution	720x480 (NTSC) or 720x576 (PAL)	Connectors	
Video Pause	Yes	SCSI	Available for additional external storage
Video Loss Detection	Yes	USB	Two USB 2.0 interface device
Alarm		Ethernet	RJ connectors for network communication
Inputs	16 alarm inputs	RS-232	9-pin female connector for local communication
Outputs	4 alarm outputs	RS-485	for PTZ and/or control keyboard
Storage		User Input Device	Front panel keypad, Shutter/Jog, Remote Control, Control Keyboard, USB Mouse (Optional)
Hard Disk Storage	up to 2 internal 3.5" IDE hard Disk	Power	
External Storage	USB 2.0 for external USB Flash Memory and SCSI Drive	Power Source	AC100~240V
Power Consumption		Power Consumption	50W
Recording/Search		Physical	
Recording Rate	Up to 480FPS	Dimension	430(W) x 402.5(L) x 72(H) mm 16.9(W) x 15.8(L) x 2.8(H) inches
Recording Mode	Normal, Schedule Recording Event recording (Motion, Video Loss, Alarm)	Weight	Approximately 6.42kg (14 lbs)
Playback Rate	Up to 480FPS	Operating Temperature	
Playback Search	By Date/Time or Event (Motion, Video Loss, Alarm)	Temperature	0°C~40°C (32°F~104°F)



## ® EverFocus Electronics Corp.

### EverFocus California:

1801 Highland Ave. Unit A  
Duarte, CA 91010, U.S.A.  
TEL: 626-844-8888  
FAX: 626-844-8838  
Web: <http://www.everfocus.com>  
Email: [info@everfocus.com](mailto:info@everfocus.com)

### EverFocus New York:

415 Oser Ave. Unit S  
Hauppauge, NY 11788  
TEL: 631-436-5070  
FAX: 631-436-5027  
Web: <http://www.everfocus.com>  
Email: [info@everfocus.com](mailto:info@everfocus.com)

### EverFocus Taiwan:

12F, No.79 Sec. 1 Shin-Tai Wu Road,  
Hsi-Chi, Taipei, Taiwan  
TEL: +886 (0) 2-26982334  
FAX: +886 (0) 2-26982380  
Web: <http://www.EverFocus.com.tw/>  
Email: [marketing@EverFocus.com.tw](mailto:marketing@EverFocus.com.tw)

### EverFocus China:

Room B-05D-1, KESHI PLAZA,  
Shangdi Information Industry Base,  
Haidian District, Beijing China 100085  
TEL: +86 (0) 10-62971096  
FAX: +86 (0) 10-62971432  
Web: <http://www.EverFocus.com.cn/>  
Email: [marketing@EverFocus.com.cn](mailto:marketing@EverFocus.com.cn)

### EverFocus Germany:

Albert-Einstein-Strasse 1,  
D-46446 Emmerich, Germany  
TEL: +49 (0) 2822-93940  
FAX: +49 (0) 2822-939495  
Web: <http://www.EverFocus.de>  
Email: [info@EverFocus.de](mailto:info@EverFocus.de)

### EverFocus Japan:

1809 WBG Marive East 18F,  
2-6 Nakase.Mihama-ku.  
Chiba City 261-7118, Japan  
TEL: +81 (0) 43-212-8188  
FAX: +81 (0) 43-297-0081

Distributed by